



luxury lifestyle. affordable prices.



CARNATION

— RESIDENCY —

sector 85 • new gurgaon

an aspiring location



Carnation Residency is strategically located in sector 85, new gurgaon, around 1 km from NH-8. Key distances of carnation residency from the following milestones are:

- Proposed metro station and ISBT in very close proximity
- 5 mins. drive from industrial hub i.e. IMT Manesar
- Around 5 mins. drive from the proposed ISBT
- 20 mins. drive from IGI airport
- 25 mins. drive from domestic airport
- Easy access from dwarka expressway





new gurgaon gets a new premium address: carnation residency

Carnation Residency is a conveniently located modern group housing project spread over 26 acres. Carnation Residency offers a charming blend of classic indian living with the best of modern amenities to ensure warm and cosy living..

Homes for contemporary living

- 100 % power backup
- Ultra-modern facilities
- Landscaping by international architect Nelson, USA

Geared for ultimate safety

- 24x7x365 gated security
- Earthquake resistant buildings
- Rain water harvesting

Giving you tomorrow's lifestyle Club Facilities

- Multipurpose room
- Swimming pool
- Gymnasium
- Library

Common facilities

- High speed lifts
- Convenient & daily need shops
- Water bodies in green areas

Other facilities

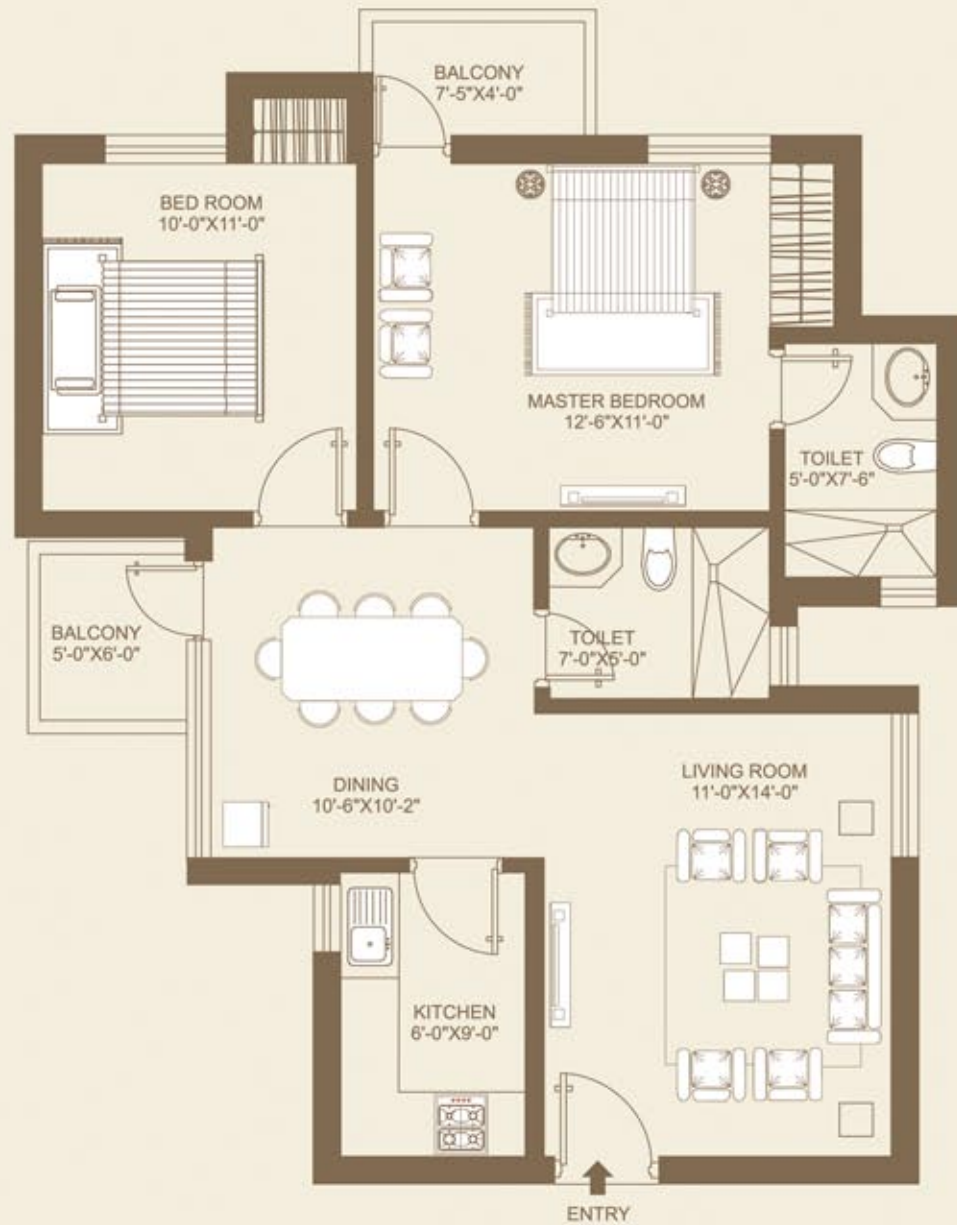
- Play school
- Primary school
- Children park & water bodies
- Paved path ways & central park
- Sand pits for kids, swings
- Dedicated car parking

Compact & efficient layout for 2, 3, & 4 bedroom apartments.

• Areas offered:

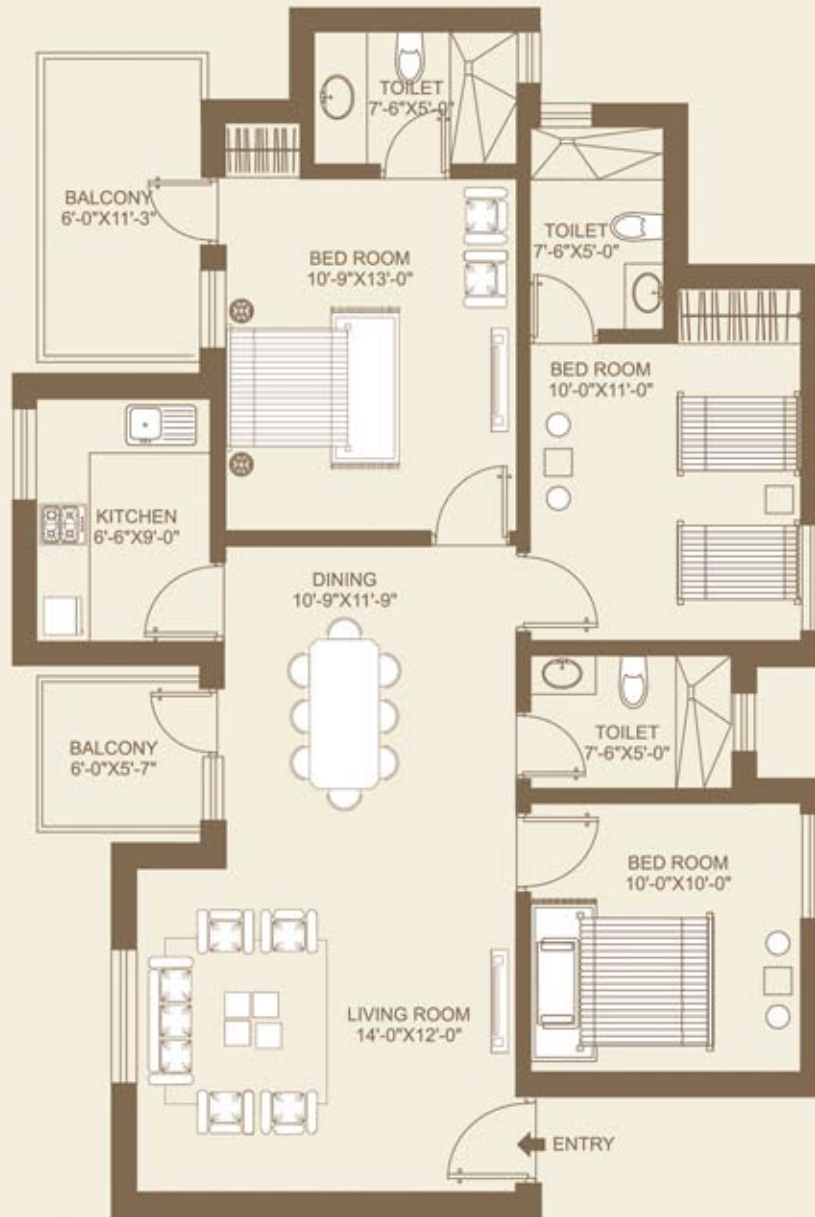
- 2 bhk 1050 sq.ft
- 3 bhk 1350 sq.ft
- 3 bhk + servant 1500 sq.ft
- 4 bhk 1800 sq.ft

floor plans



TWO BED ROOM UNIT
SUPER AREA - 1050 SQ.FT.

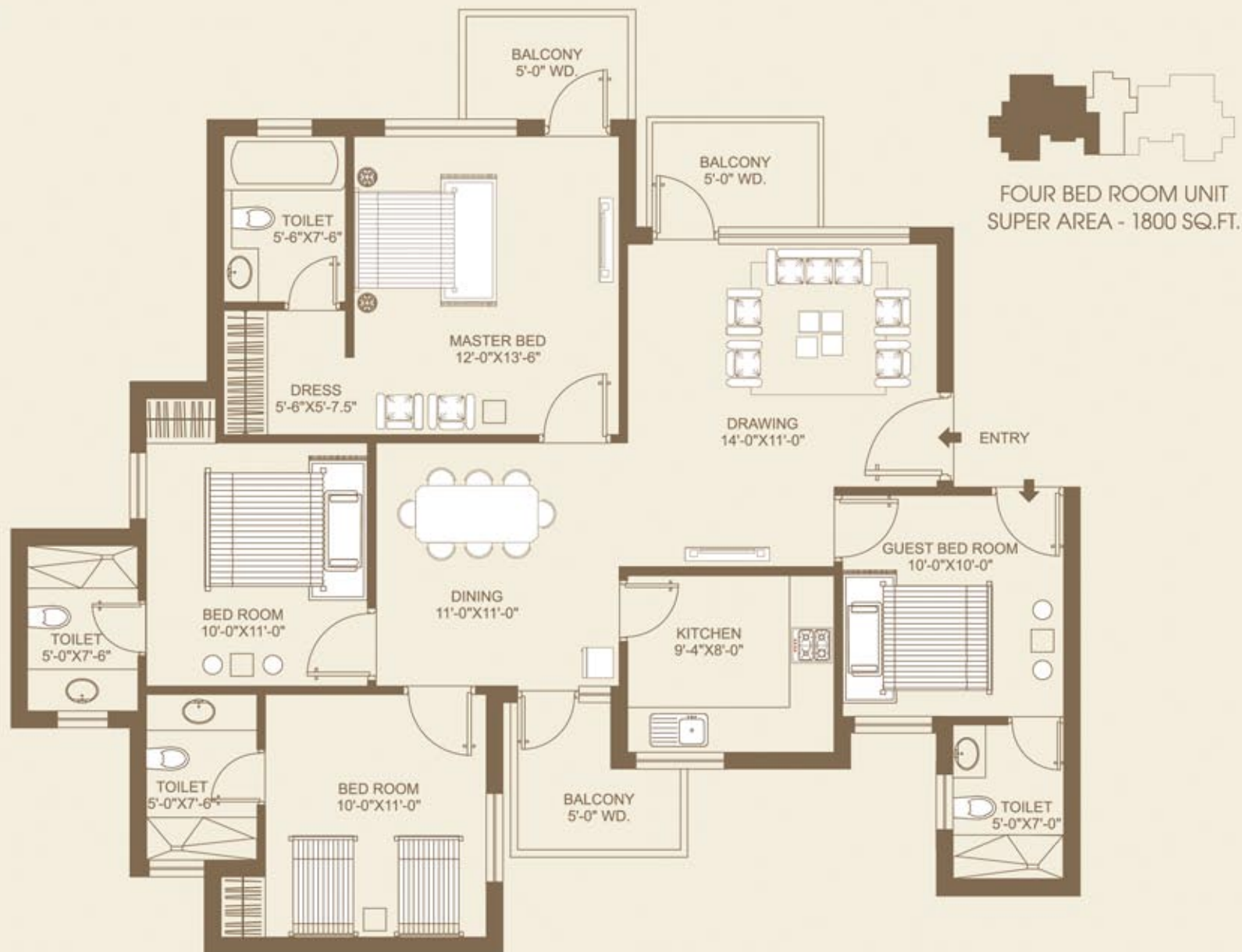
floor plans



floor plans



floor plans



proposed specifications for carnation residency

| LOCATION | FLOOR | WALLS | CEILING | DOORS | WINDOWS | IRONMONGERY | OTHERS |
|---------------------------------|---|--|----------------------------|--------------------------------|-----------------------------|---|---|
| LIVING DINNING | VITRIFIED TILES | ACRYLIC WASHABLE DISTEMPER | ACRYLIC WASHABLE DISTEMPER | FLUSH DOOR WITH HARDWOOD FRAME | ALUMINIUM FRAME AND GLAZING | STAINLESS STEEL/ BRASS FINISHED HANDLES & LATCHES | MODULAR TYPE SWITCHES & SOCKETS, COPPER WIRING |
| BED ROOMS | VITRIFIED TILES | ACRYLIC WASHABLE DISTEMPER | ACRYLIC WASHABLE DISTEMPER | FLUSH DOOR WITH HARDWOOD FRAME | ALUMINIUM FRAME AND GLAZING | STAINLESS STEEL/ BRASS FINISHED HANDLES & LATCHES | MODULAR TYPE SWITCHES & SOCKETS, COPPER WIRING |
| TOILETS | ANTISKID CERAMIC FLOOR TILES | COMBINATION OF CERAMIC TILES & ACRYLIC WASHABLE DISTEMPER | ACRYLIC WASHABLE DISTEMPER | FLUSH DOOR WITH HARDWOOD FRAME | ALUMINIUM FRAME AND GLAZING | STAINLESS STEEL/ BRASS FINISHED HANDLES & LATCHES | WHITE SANITARY FIXTURES & C.P. FITTINGS |
| KITCHEN | VITRIFIED TILES | COMBINATION OF CERAMIC TILES & ACRYLIC WASHABLE DISTEMPER | ACRYLIC WASHABLE DISTEMPER | FLUSH DOOR WITH HARDWOOD FRAME | ALUMINIUM FRAME AND GLAZING | STAINLESS STEEL/ BRASS FINISHED HANDLES & LATCHES | INDIAN MARBLE COUNTER WITH STAINLESS STEEL SINK |
| BALCONIES | VITRIFIED TILES | EXTERIOR EMULSION PAINT AND MS RAILING FINISHED WITH SYNTHETIC ENAMEL PAINT | ACRYLIC WASHABLE DISTEMPER | FLUSH DOOR WITH HARDWOOD FRAME | | STAINLESS STEEL/ BRASS FINISHED HANDLES & LATCHES | |
| COMMON PASSAGE | INDIAN MARBLE | ACRYLIC EMULSION PAINT | ACRYLIC EMULSION PAINT | | | | |
| MAIN STAIRCASE | INDIAN STONE (RISERS & TREADS) | ACRYLIC EMULSION PAINT WITH MS BALUSTERS FINISHED WITH SYNTHETIC ENAMEL PAINT & HANDRAIL | ACRYLIC WASHABLE DISTEMPER | | | | |
| AMENITIES | 100% POWER BACK-UP, PANIC ALARM, INTERCOM AT SECURITY GATE AND TOWER ENTRY. TELEPHONE POINT IN EACH FLAT. COMMUNITY HALL, JOGGING TRACK & KIDS PLAY AREA. | | | | | | |
| STRUCTURE | EARTHQUAKE RESISTANT RCC FRAMED STRUCTURE | | | | | | |
| EXTERNAL DEVELOPMENT/ LANDSCAPE | REFLECTING POOL, DECK WITH METAL TRELLIS, SCULPTURED GARDEN & MAIN ENTRANCE PLAZA | | | | | | |
| LIFT | ONE PASSENGER & ONE SERVICE LIFT IN EACH TOWER. | | | | | | |

DESIGNED & LANDSCAPE BY INTERNATIONAL ARCHITECT - NELSON.

expect the best from the house of orris.

two landmark projects on NH-8.



Floreal Towers

Pioneering Green Building

1st Commercial project to commence construction
on NH-8, New Gurgaon

OFFICE SPACE SOLD OUT RETAIL SPACE BOOKINGS OPEN



BUSINESS SQUARE

NH-8, Sector - 82A, Gurgaon

Not just another building but Certified green building located
on NH- 8, New Gurgaon

PROPOSED 5 STAR AND BUSINESS HOTEL WITH CONVENTION CENTRE





Orris Infrastructure Pvt. Ltd.

308-309, Vipul Agora, M.G. Road, Gurgaon 122002 • Tel +91-124-4370000 • Fax +91-124-2353291/92

Email mail@orris.in • Website www.orris.in

Disclaimer: All visual photographs shown in this brochure are artistic impression and not a legal offering. All specifications, building plans, area, sizes, layout plans, concepts including but not limited to green concept etc. are tentative and subject to such change, variations and modifications as decided by the architects or by the promoter or the competent authorities sanctioning the plan.